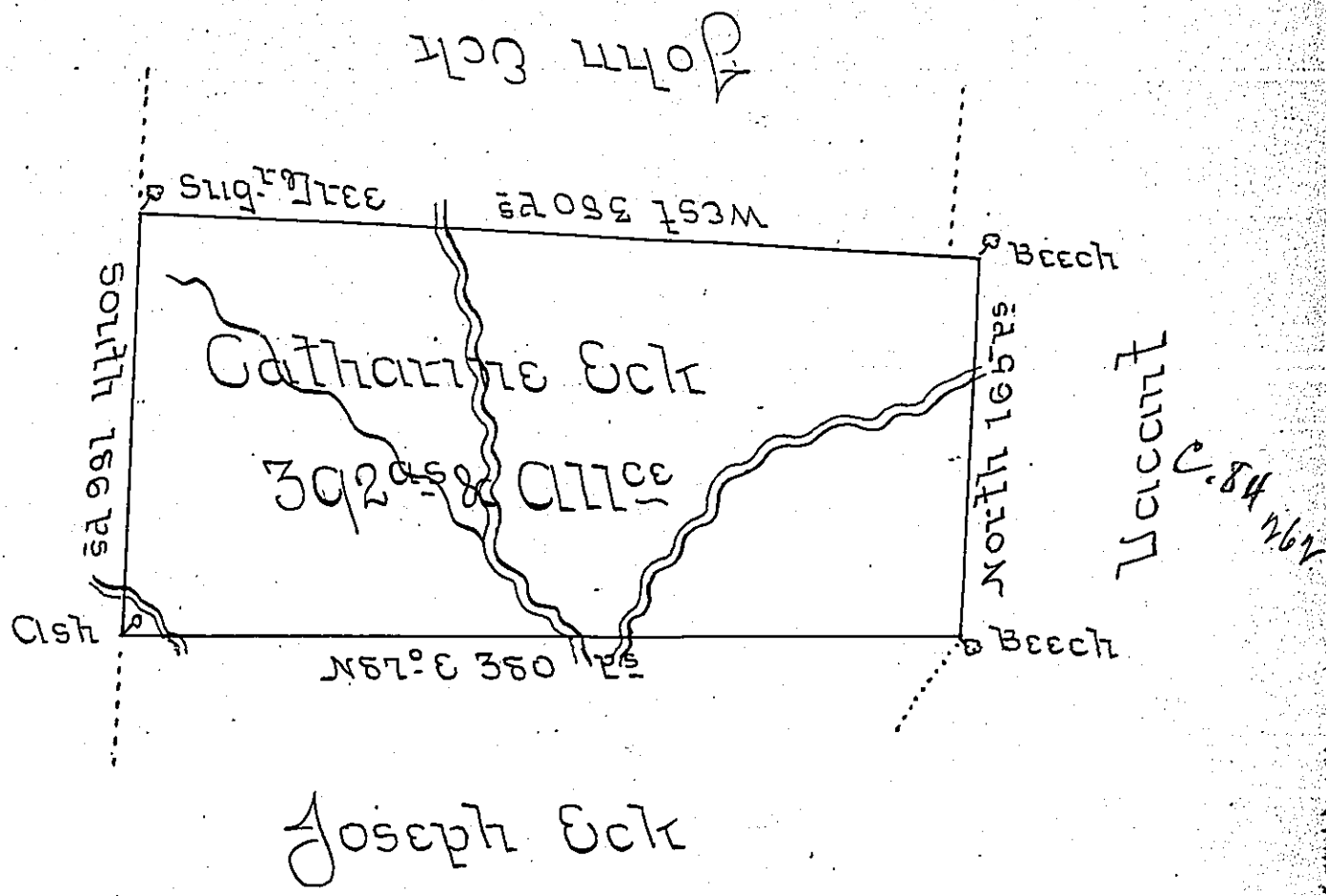


Daniel Wister



Joseph Eck

A Draught of a Tract of Land Called  
 situate on the Waters of Royal Sock Creek in  
 Northumberland County Surveyed the 5<sup>th</sup>  
 day of October 1790 for Catharine Eck on  
 Warrant dated the 23<sup>rd</sup> of February 1790 Con-  
 taining three hundred and ninety two acres  
 and the Allowance of six Percent for Roads &c.

Jo: Wallis U.S.

To Daniel Brodhead Esq: }  
 Surveyor General }

IN TESTIMONY that the above is a copy of the original remaining on file in  
 the Department of Internal Affairs of Pennsylvania, made  
 conformably to an Act of Assembly approved the 16th day of  
 February, 1833, I have hereunto set my Hand and caused  
 the Seal of said Department to be affixed at Harrisburg,  
 this SEVENTH day of DECEMBER 1904.

*James P. Brown*  
 Secretary of Internal Affairs.